



Oral representation cannot be relied upon stating representations of the developer. All site plans, features, amenities, future plans, artists' conceptions and pricing are subject to change without notice. This offer void in states where prohibited by law.

O 561 255 6535
F 772 221 0692

2387 SE Dixie Highway
Stuart, FL 34966

Mailing Address:

Website and Virtual Tour:
INLETWATERSTOWNHOMESJUPITER.com

Inlet Waters is located within the Town of Jupiter, with direct access to the ocean and near a myriad of cultural, entertainment and shopping opportunities of Palm Beach County. Within 10 minutes of the Gardens Mall, I-95 and the Jupiter and Palm Beach inlets. 30 minutes from Palm Beach International Airport.



ORAL REPRESENTATIONS CANNOT BE RELIED UPON AS CORRECTLY STATING REPRESENTATIONS OF THE DEVELOPER. FOR CORRECT REPRESENTATIONS, MAKE REFERENCE TO THIS BROCHURE AND TO THE DOCUMENTS REQUIRED BY SECTION 718.503, FLORIDA STATUTES, TO BE FURNISHED BY A DEVELOPER TO A BUYER OR LESSEE.



The classic Key West townhouse is the signature of sophisticated living. Now affordably recreated with a new flair that combines traditional elegance and the open, flowing design that is the hallmark of modern Florida living.

AN ELEGANT NEW TOWN HOUSE CONDOMINIUM NEAR THE OCEAN IN JUPITER, FLORIDA

Inlet Waters brings stylish townhouse living to Jupiter in an intimate, private enclave of just 33 condominium residences. With the ocean just two blocks away, Inlet Waters is easily accessible to most popular destinations in Northern Palm Beach County. Within the community, you'll enjoy a carefree lifestyle that includes swimming pool, cabana and beautiful Jupiter River access, all without the need to worry about outside maintenance.

The 2-story, 3 bedroom, 2-1/2 bath floor plans offer over 2000 square feet of air-conditioned living area (plus garage), with a ground-level patio and spacious balconies on the upper level for an additional 693 square feet of outdoor living. Our designs offer exquisitely finished interiors featuring a complete suite of upscale appliances, designer cabinetry, tile and wall to wall carpeted floor treatments beneath 9 and 10 foot ceilings.

With the choice of finishes and floorings, your home will reflect your own unique tastes and lifestyle and with exceptionally affordable pricing, Inlet Waters reflects your wise sense of value.

COMMUNITY FEATURES

- Inlet Waters is located within the Town of Jupiter, with access to the ocean and near a myriad of cultural, entertainment and shopping opportunities.
- A private community pool & cabana
- Lush tropical community landscaping
- Jupiter River Access

EXTERIOR FEATURES

- Professionally-designed landscape package
- Convenient common irrigation system
- Cement block construction with lightly textured stucco finish and decorative trim
- Brick paver walkways, patios and driveways
- Patio and balconies per plan
- Sliding glass doors with impact resistant safety glass and windows with screens
- 2 car garage with attractive raised panel door and door opener with epoxy finish floor
- Convenient exterior hose bibs per plan
- Stylish light fixture at entry
- Convenient coach light at garage
- Standing seam metal roof

INTERIOR FEATURES

- 8 ft interior doors with upgraded baseboard and door casements
- Raised-panel interior doors
- Raised-panel entry door with decorative hardware
- Ensuite master bedroom
- Granite bathroom counter tops
- Smooth ceiling texture
- Crown molding in living area
- Smooth wall texture
- Energy saving R20 ceiling insulation
- Central vacuum
- 10 ft Ceiling 1st floor & 9 ft ceiling 2nd floor
- Ventilated, vinyl-coat closet shelving
- Pre-wired security system
- Pre-wired to accommodate both telephone and high speed computer connection throughout the home
- Pre-wired for Cable-TV in family room, living, kitchen and all bedrooms
- Pre-wired for ceiling fans in family room and all bedrooms
- Electronic door chime
- 3 ton Air Conditioner

FLOORING FEATURES

- Elegant tile in foyer, kitchen and bathrooms in choice of colors
- Designer carpeting areas in choice of colors

KITCHEN FEATURES

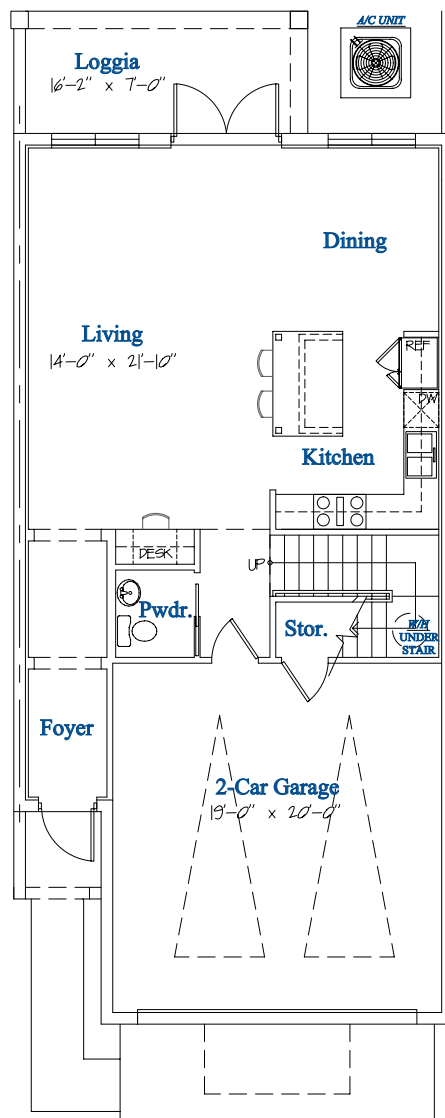
- Designer wood cabinetry with upscale finishes and concealed hinges
- Partial under kitchen cabinet lighting
- Granite kitchen counter tops
- Full kitchen back splash in designer finishes.
- Attractive upscale faucet in brushed nickel finish with side spray
- Stylish porcelain sink

APPLIANCE FEATURES

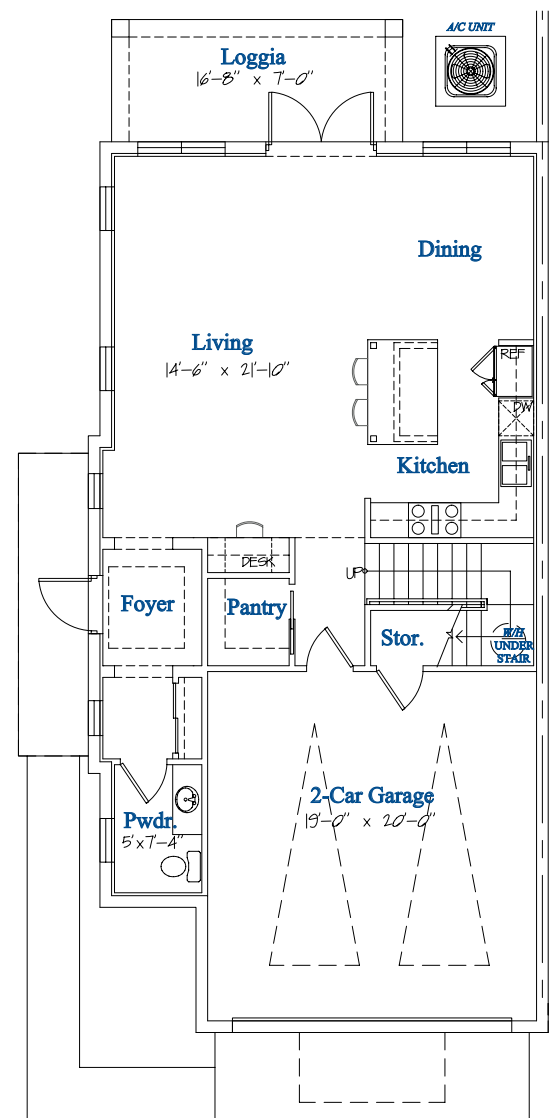
- 150-amp service
- Upscale side by side GE "profile" refrigerator with ice maker
- Upscale self cleaning range with range hood
- Upscale 3 cycle dishwasher
- Convenient 1/3-hp garbage disposal
- Upscale GE "profile" microwave
- Upscale washer and dryer

AREA CALCULATION CORE UNIT			
FIRST FLOOR A/C	805 SQ.FT.	GARAGE	405 SQ.FT.
SECOND FLOOR A/C	1,200 SQ.FT.	LOGGIA	139 SQ.FT.
TOTAL A/C AREA	2,005 SQ.FT.	BALCONIES	149 SQ.FT.
		TOTAL AREA	2,698 SQ.FT.

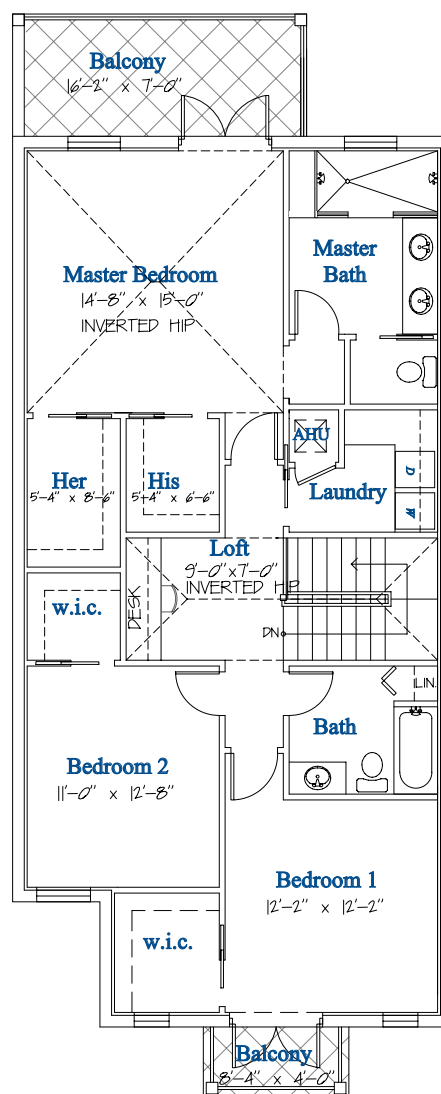
AREA CALCULATION END UNIT			
FIRST FLOOR A/C	865 SQ.FT.	GARAGE	401 SQ.FT.
SECOND FLOOR A/C	1,232 SQ.FT.	LOGGIA	116 SQ.FT.
TOTAL A/C AREA	2,097 SQ.FT.	BALCONIES	220 SQ.FT.
		TOTAL AREA	2,834 SQ.FT.



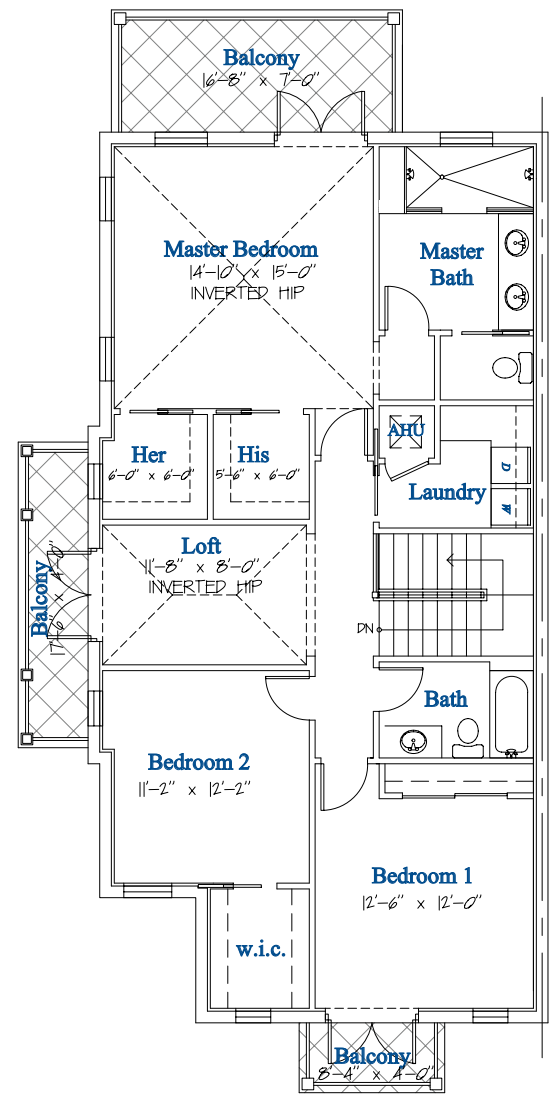
First Floor Plan Core Unit



First Floor Plan End Unit



Second Floor Plan Core Unit



Second Floor Plan End Unit

